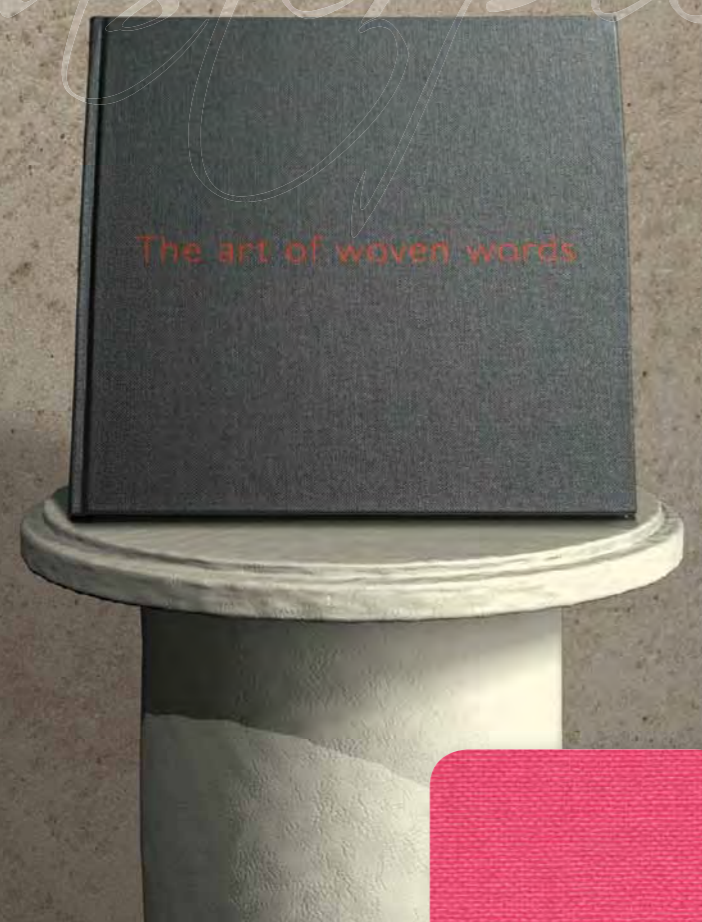


# METALLIUM



Masterpieces



# TECHNISCHE SPECIFICATIES TECHNICAL SPECIFICATIONS TECHNISCHE DATEN



## METALLIUM

<b>ketting/warp/Kette</b>	20,5 draden/threads/Fäden per cm 50% katoen/cotton/Baumwolle, Nm 34 50% polyester
<b>inslag/weft/Schuss</b>	18 draden/threads/Fäden per cm 50% katoen/cotton/Baumwolle, Nm 28 50% polyester
<b>gewicht/substance</b>	259 g/m <sup>2</sup>
<b>dikte/caliper/Dicke</b>	ca. 0,32 mm
<b>lengte/roll size/Länge</b>	50 meter
<b>breedte/width/Breite</b>	108 cm 108 cm benutbare breedte/usable width/Nutzbreite



## van Heek textiles

Een sterk weefsel met een eigentijdse look, ook geschikt voor zwaardere toepassingen. Door het vlakliggende en gladde oppervlak is het uitstekend te bedrukken in offset-, zeef- en foliedruk.

A strong weave with a contemporary look, also suitable for heavier applications. Its smooth surface and flatness makes it excellent for use with offset, screen and foil printing.

Ein starkes Gewebe in modernem Look, das sich auch für anspruchsvollere Anwendungen eignet. Die glatte Oberfläche und ideale Planlage gewährleisten gute Ergebnisse für den Offset-, Sieb- und Foliendruck.

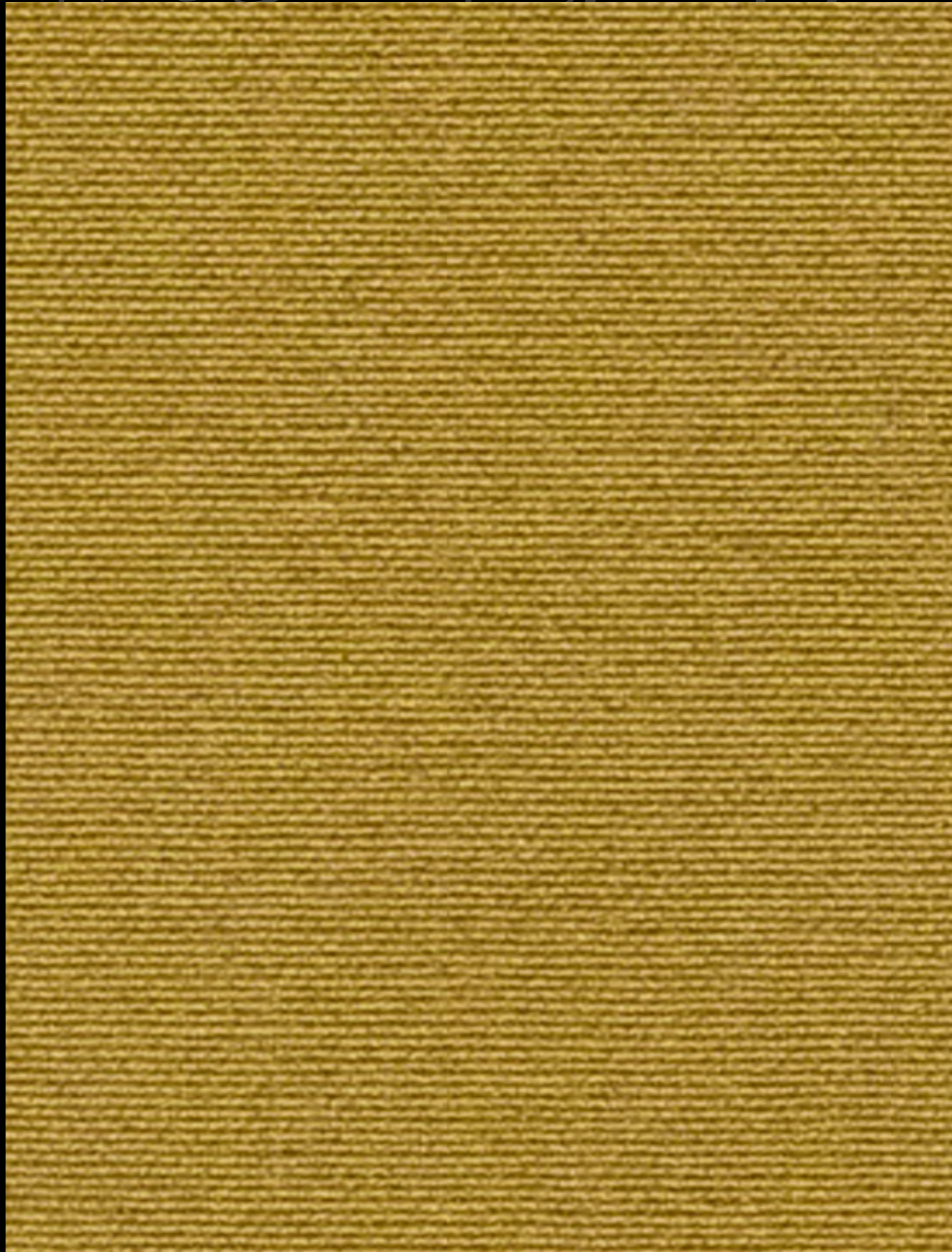


## van Heek textiles

L. van Heek Textiles  
P.O. Box 1  
7580 AA Losser-Holland  
Gronausestraat 309  
Telephone +31(0)53 5371111  
Fax +31(0)53 5371140  
info@vanheektextiles.com  
www.vanheektextiles.com

# METALLIUM

# METALLIUM



13303



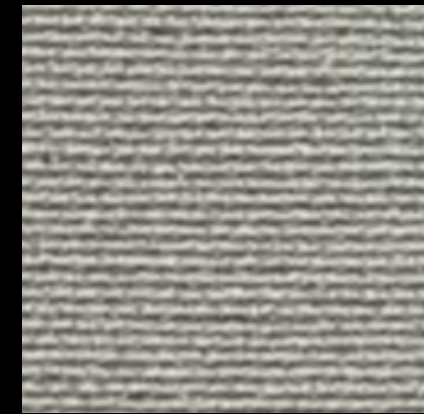
13321



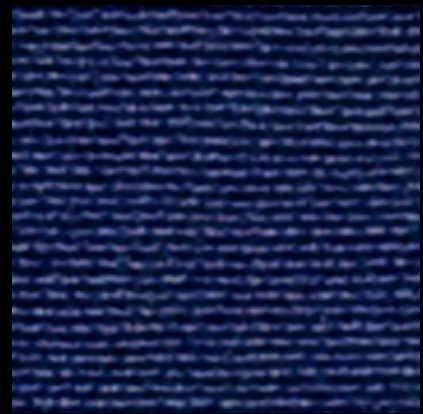
13305



13320

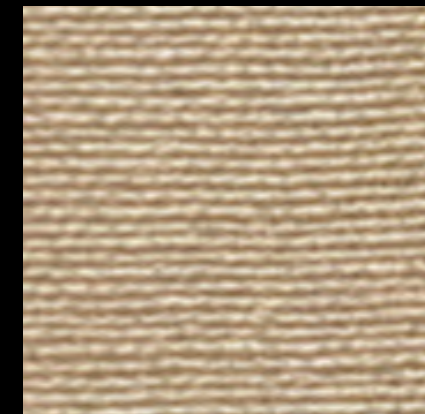


13302



13333

NEW

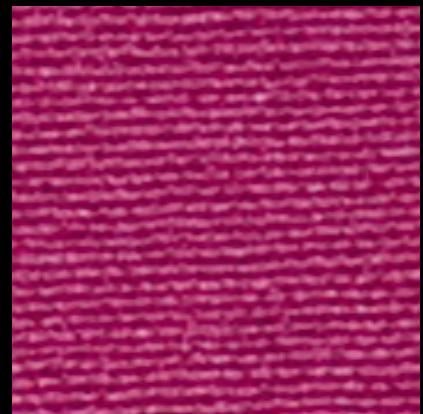


13330

NEW

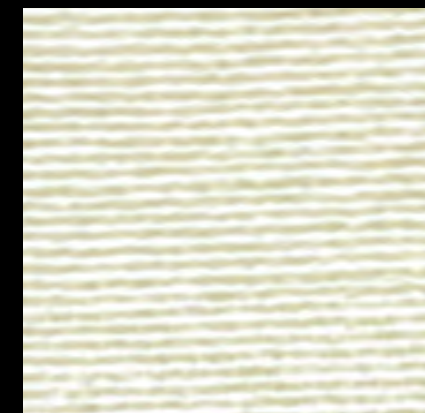


13304



13331

NEW



13332

NEW



13300



13319

13301

Technische specificaties: zie achterzijde / Technical specifications: see back of card / Technische Daten: siehe Rückseite